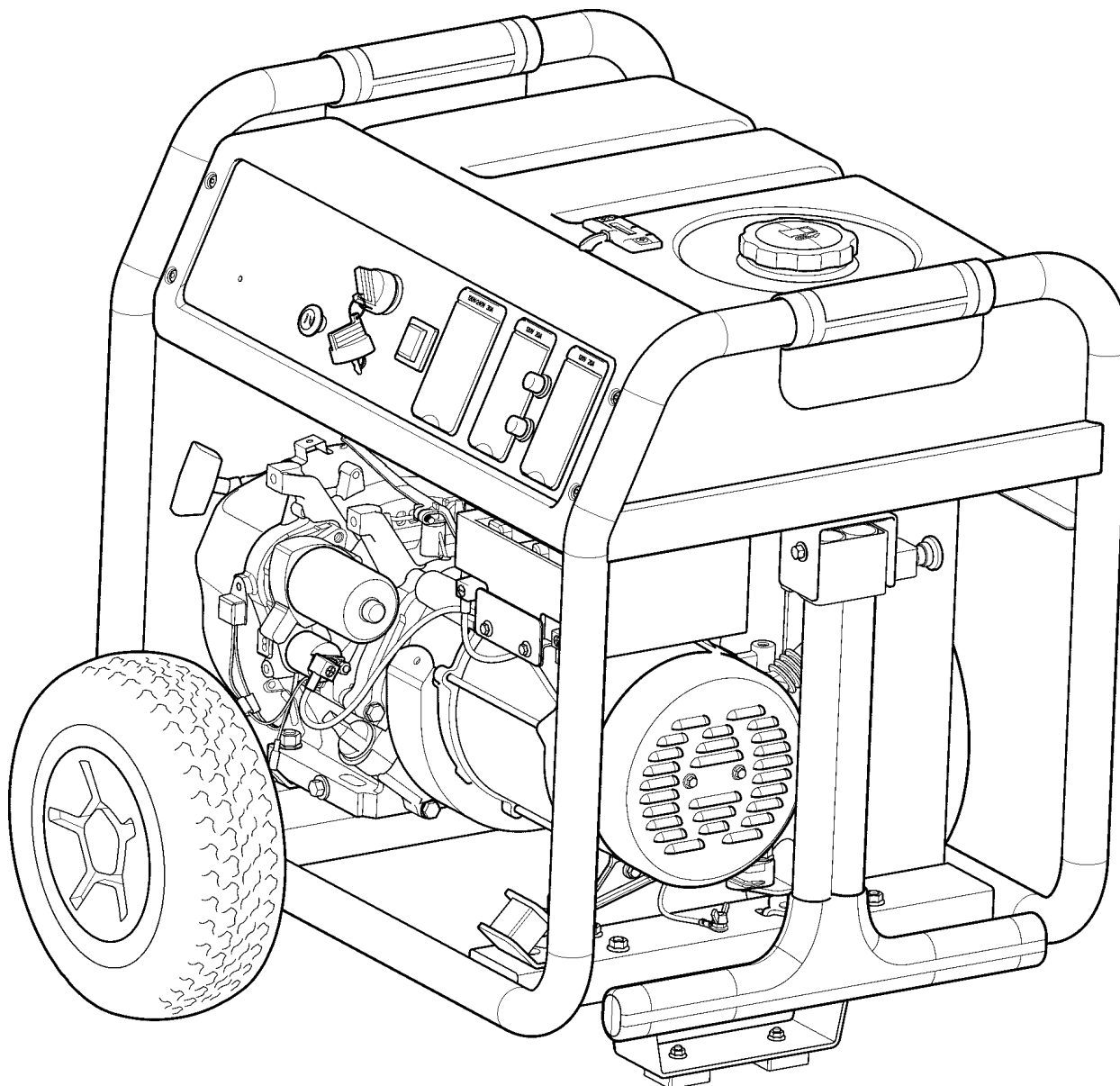




Parts Manual

Mfg. No: 030679-00
8,000 Watt Briggs & Stratton



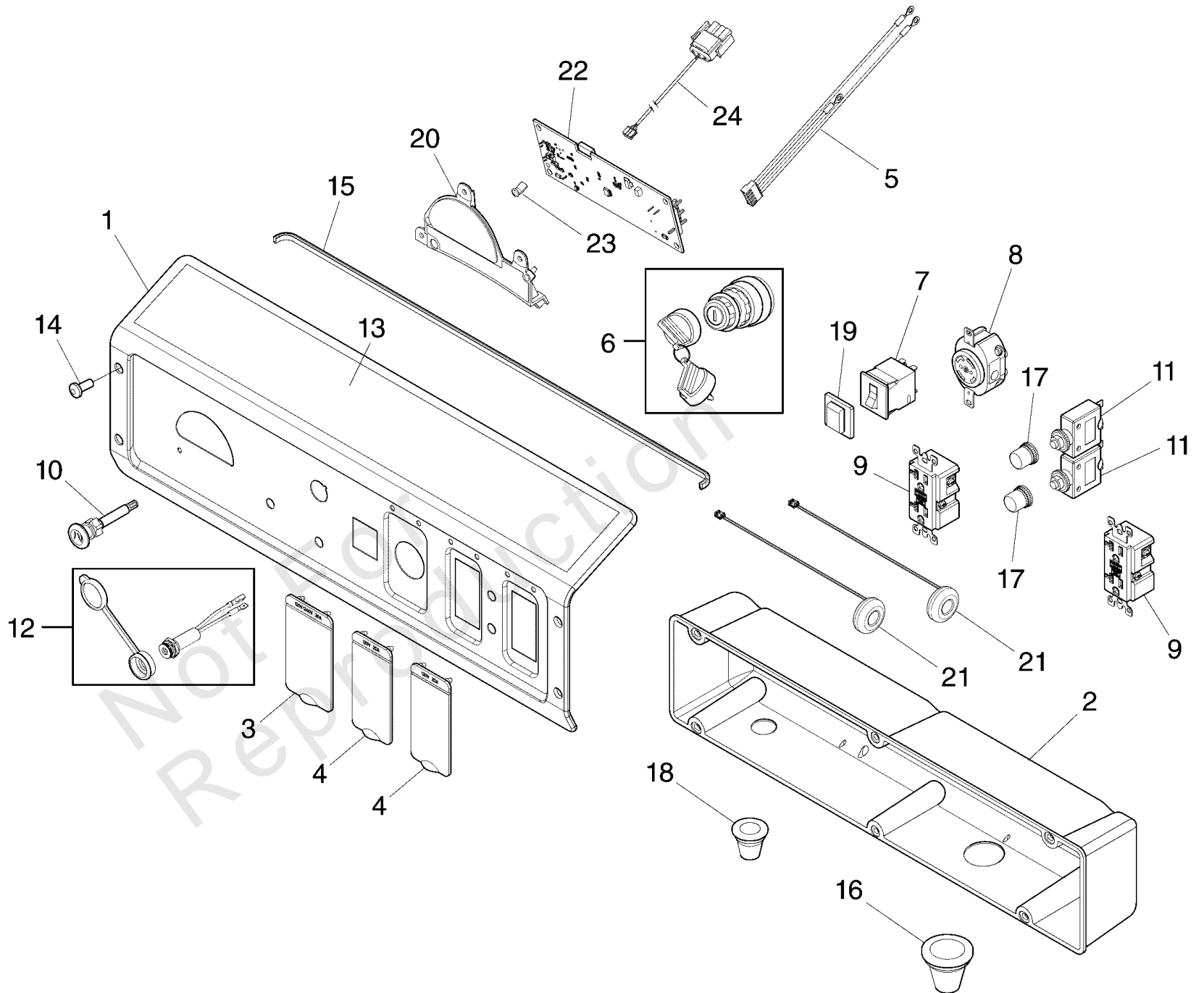
Model Components	Page
Control Panel (80021827).....	4
Main Unit (80021826).....	6
Wheel Kit (312167).....	10
Wiring Diagram (80016749WD).....	12
Wiring Schematic (80016749WS).....	14
Torque Specification Chart.....	16

Not For
Reproduction

Control Panel (80021827)

Note: Unless noted otherwise, use the standard torque specifications

Mfg. No: 030679-00



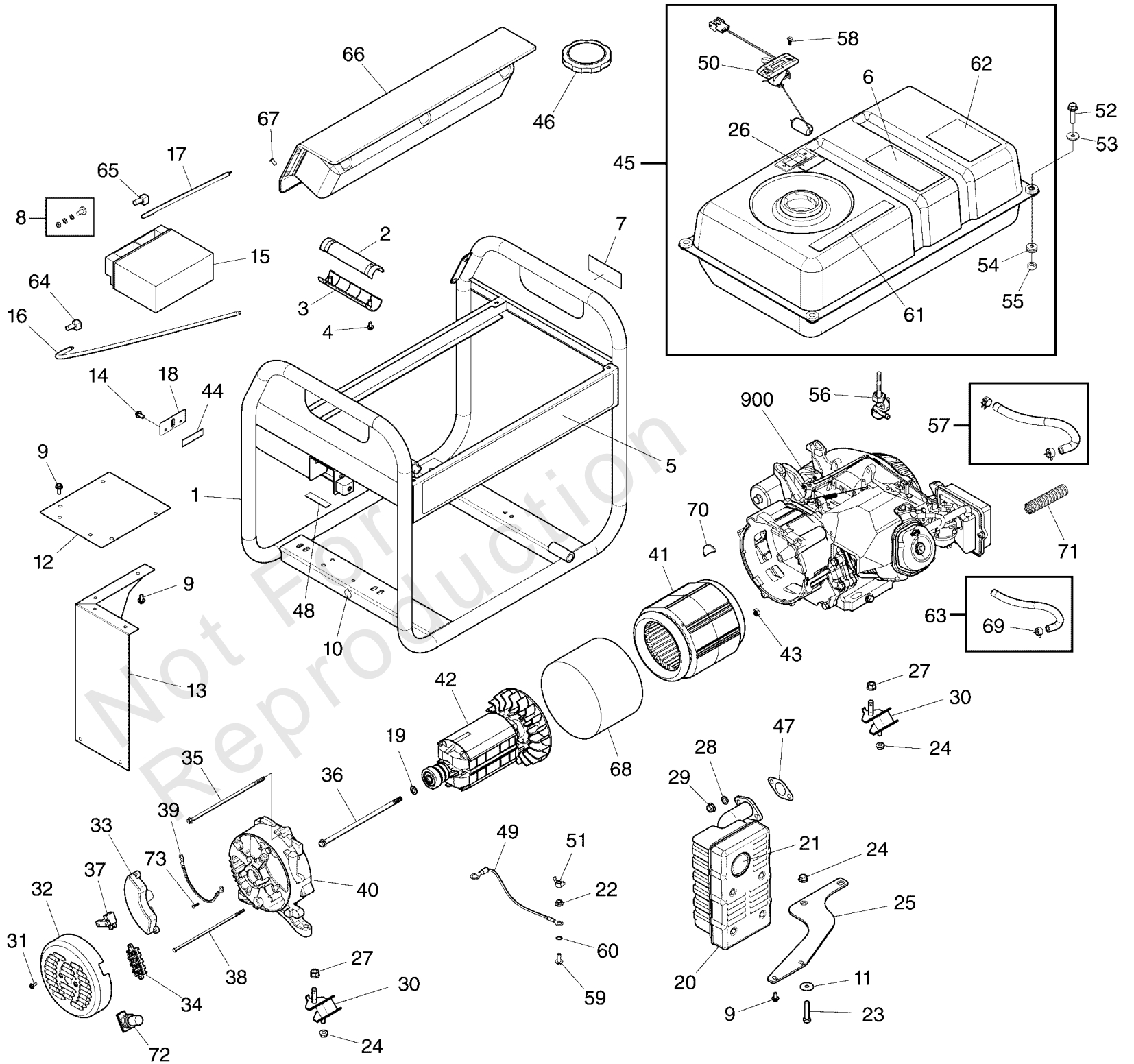
Control Panel (80021827)

REF NO	PART NO	QTY	DESCRIPTION
1	705444		PANEL-CONTROL
2	319458GS		BOX-CONTROL PANEL
3	319477GS		COVER-OUTLET
4	319476GS		COVER-OUTLET
5	705855		HARNESS, Power Board
6	318307GS		KEY-SWITCH IGNITION
--	705436		KEY -(Included in item # 6)
7	202033GS		BREAKER-CIRCUIT 30A
8	43437GS		OUTLET-120/240V TL30A
9	80409GS		OUTLET-120V GFCI 20A
10	312034GS		CABLE-CHOKE
11	209872GS		BREAKER-CIRCUIT 20A
12	704656		SOCKET-CHARGER
--	312687GS		RUBBER COVER -(Included in item # 12)
13	705498		DECAL
14	703804		SCREW
15	319459GS		TRIM-EDGE
16	319529GS		GROMMET
17	312636GS		BOOT-CIRCUIT BREAKER
18	319530GS		GROMMET
19	191481GS		BOOT, Breaker Circuit
20	705409		BRACKET
21	705454		TRANSFORMER
22	705408		MODULE
23	705780		LIGHT
24	706173		HARNESS-WIRE

Main Unit (80021826)

Note: Unless noted otherwise, use the standard torque specifications

Mfg. No: 030679-00



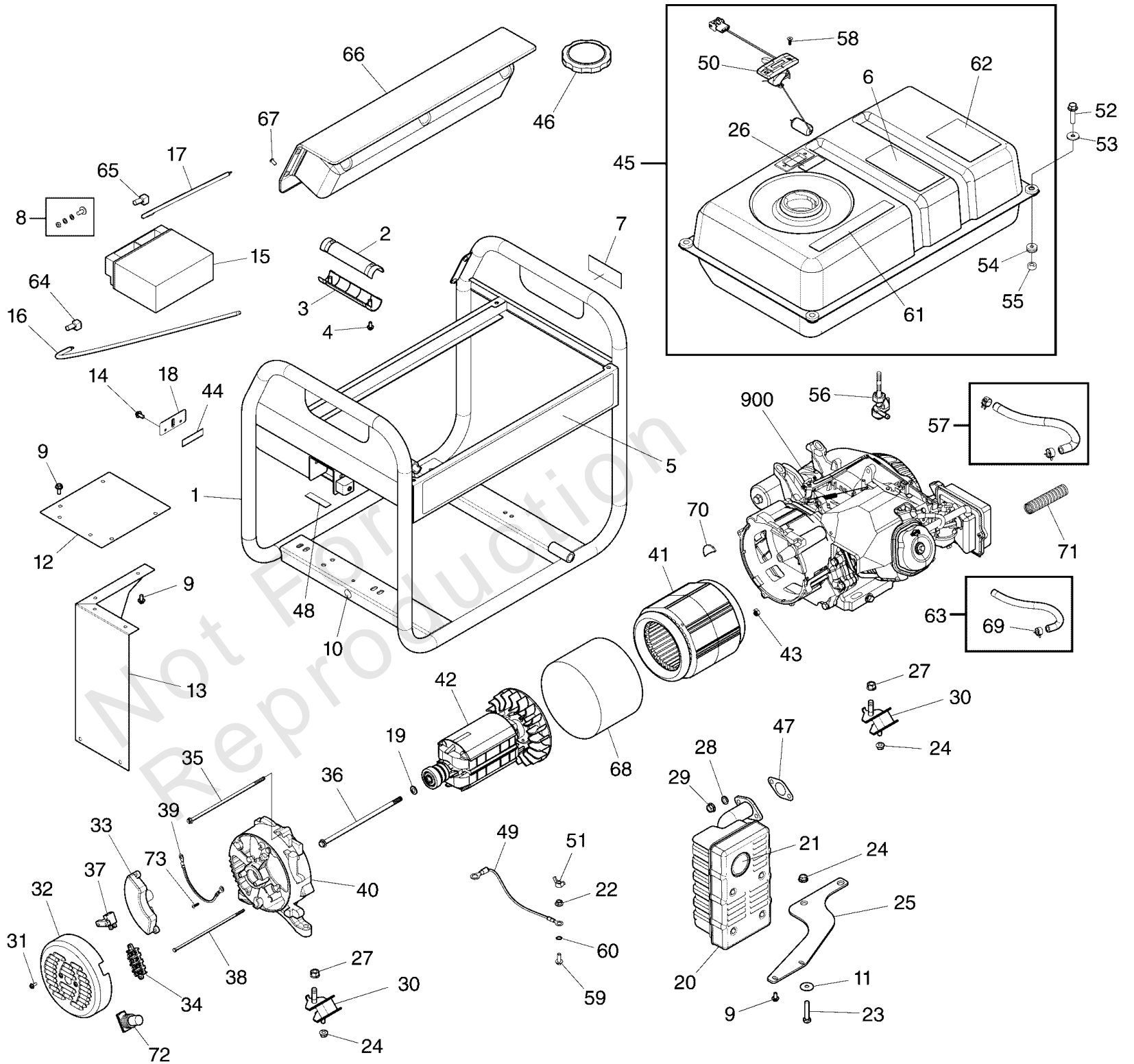
Main Unit (80021826)

REF NO	PART NO	QTY	DESCRIPTION
1	705406		CRADLE -(Includes Ref. Nos. 5, 7 & 10)
2	312009GS		GRIP-HANDLE
3	312008GS		GRIP-HANDLE
4	75477GS		SCREW
5	705635		DECAL
6	705909		DECAL
7	704189		DECAL
8	315546GS		KIT-HRDWR, BATTERY TERMINAL
9	706152		SCREW
10	704331		DECAL
11	B2495GS		WASHER
12	312020GS		HEATSHIELD
13	312019GS		HEATSHIELD
14	209775GS		BOLT
15	316345GS		BATTERY
16	312014GS		CABLE-BTTRY, RED
17	312026GS		CABLE-BTTRY, BLACK
18	311983GS		PLATE-BATTERY
19	207826GS		WASHER
20	192569GS		MUFFLER
21	83083GS		SCREEN
22	52857GS		NUT-M6 FLANGE
23	57821GS		SCREW
24	67989GS		NUT
25	319457GS		SUPPORT-MUFFLER
26	705398		DECAL
27	52859GS		NUT
28	22237GS		WASHER
29	45771GS		NUT
30	319451GS		MOUNT-VIBRATION
31	207824GS		SCREW
32	209428GS		END COVER
33	312038GS		VOLTAGE REGULATOR
34	316945GS		TERMINAL BLOCK
35	312638GS		BOLT
36	704235		BOLT
37	207827GS		BRUSH ASSY
38	312640GS		BOLT
39	706150		WIRE
40	708704		CARRIER-BEARING
41	706375		STATOR
42	312029GS		ROTOR
43	207878GS		NUT
44	706377		PAD-RUBBER
45	706002		TANK-FUEL
46	319587GS		CAP-FUEL
47	813085GS		GASKET
48	706535		PAD-RUBBER
49	706165		WIRE
50	705407		GAUGE-FUEL

Main Unit (80021826)

Note: Unless noted otherwise, use the standard torque specifications

Mfg. No: 030679-00



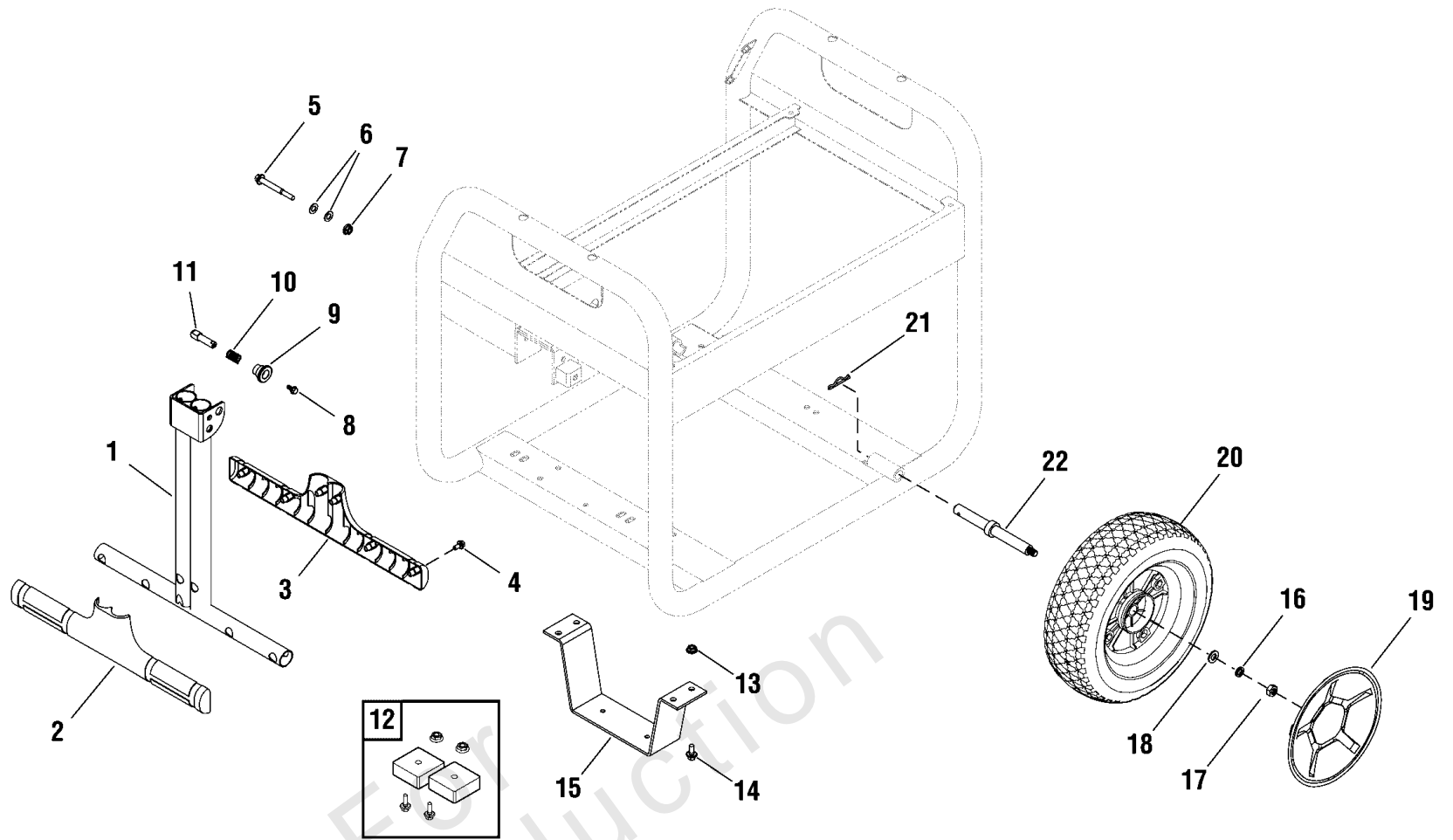
Main Unit (80021826)

REF NO	PART NO	QTY	DESCRIPTION
51	87680GS		NUT
52	703805		BOLT
53	312005GS		WASHER
54	189134GS		GROMMET
55	189137GS		SPACER
56	209417GS		VALVE-FUEL
57	791745		LINE, Fuel -(Cut to Fit)
58	314440GS		SCREW
59	706166		SCREW
60	26850GS		WASHER, Ext. M6 - 1/4" Shakeproof
61	706159		DECAL
62	705910		DECAL
63	315017GS		HOSE-VAPOR -(Cut to Fit)
64	319405GS		CAP-WIRE, RED
65	319821GS		CAP-WIRE, BLACK
66	706160		ASSY-CONTROL PANEL
67	703804		BOLT
68	706168		BOND
69	314955GS		CLAMP
70	706376		COVER-RUBBER
71	706534		BELLOWS
72	207879GS		BOOT
73	207824GS		SCREW
900	25T235-0035-G1		ENGINE
--	316742GS		FUSE -(Not Illustrated)
--	100028WEB		OIL -(Not Illustrated)
--	B4177GS		CHARGER-BATTERY -(Not Illustrated)

Wheel Kit (312167)

Note: Unless noted otherwise, use the standard torque specifications

Mfg. No: 030679-00



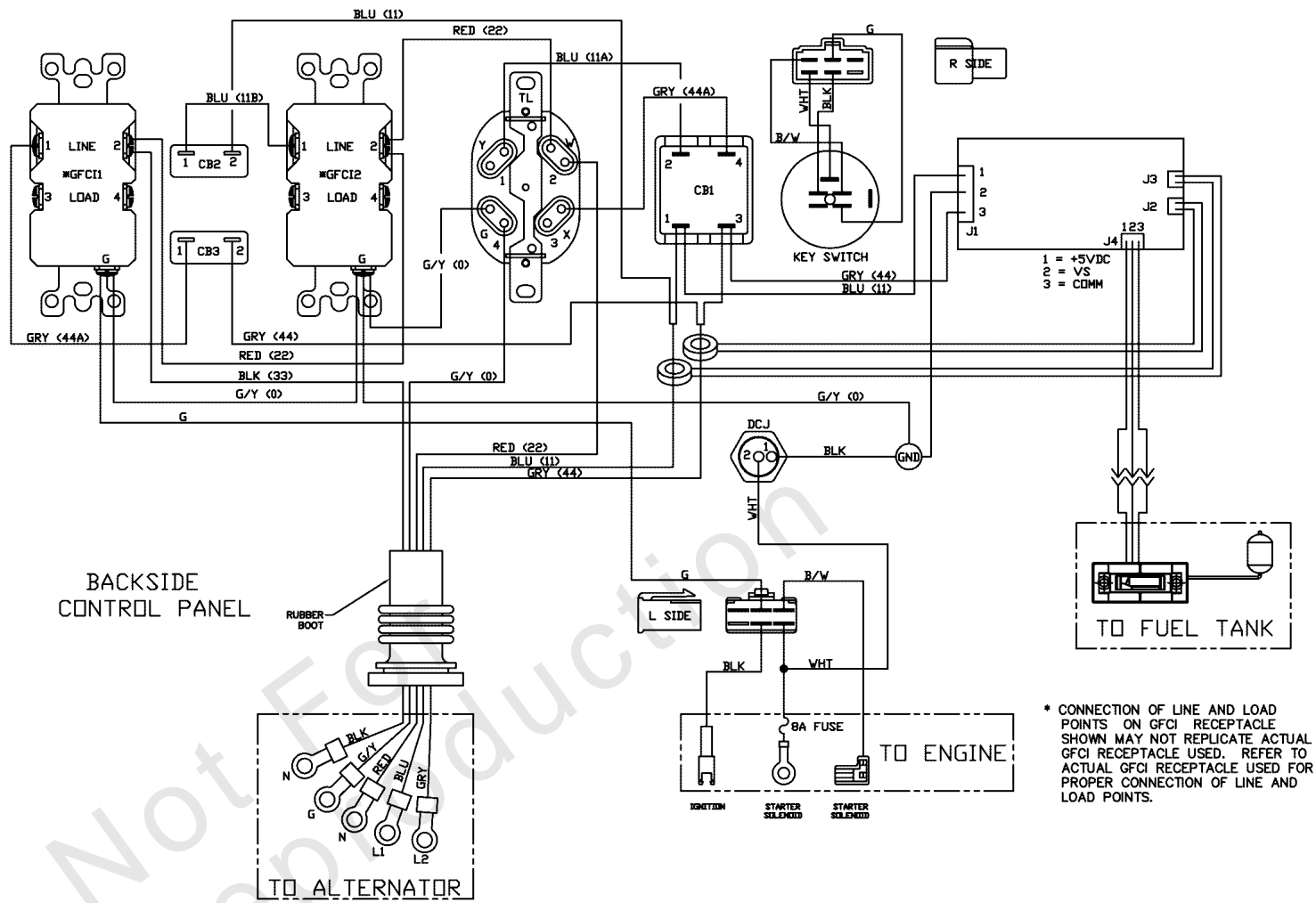
Wheel Kit (312167)

REF NO	PART NO	QTY	DESCRIPTION
1	311999GS		HANDLE
2	311998GS		GRIP-HANDLE
3	312000GS		GRIP-HANDLE
4	75477GS		SCREW-M5-0.8 x 20
5	318677GS		BOLT
6	187104GS		WASHER-NYLON M8
7	49820GS		NUT-M8-1.25 NYLOK
8	207825GS		BOLT-M5-6 x 16
9	312016GS		KNOB
10	312015GS		SPRING
11	312017GS		PIN
12	319285GS		MOUNT-VIBRATION
13	52857GS		NUT-M6 FLANGE
14	42568GS		SCREW-M8 x 16
15	311994GS		SUPPORT-LEG
16	46526GS		WASHER-M10 LOCK
17	45772GS		NUT-M10 LOCK
18	94856GS		WASHER-M10 FLAT
19	312022GS		HUBCAP
20	312021GS		WHEEL
21	5025210YP		PIN, HAIR, .0915 X 1-7/8
22	312023GS		AXLE

Wiring Diagram (80016749WD)

Note: Unless noted otherwise, use the standard torque specifications

Mfg. No: 030679-00



* CONNECTION OF LINE AND LOAD POINTS ON GFCI RECEPTACLE SHOWN MAY NOT REPLICATE ACTUAL GFCI RECEPTACLE USED. REFER TO ACTUAL GFCI RECEPTACLE USED FOR PROPER CONNECTION OF LINE AND LOAD POINTS.

Wiring Diagram (80016749WD)

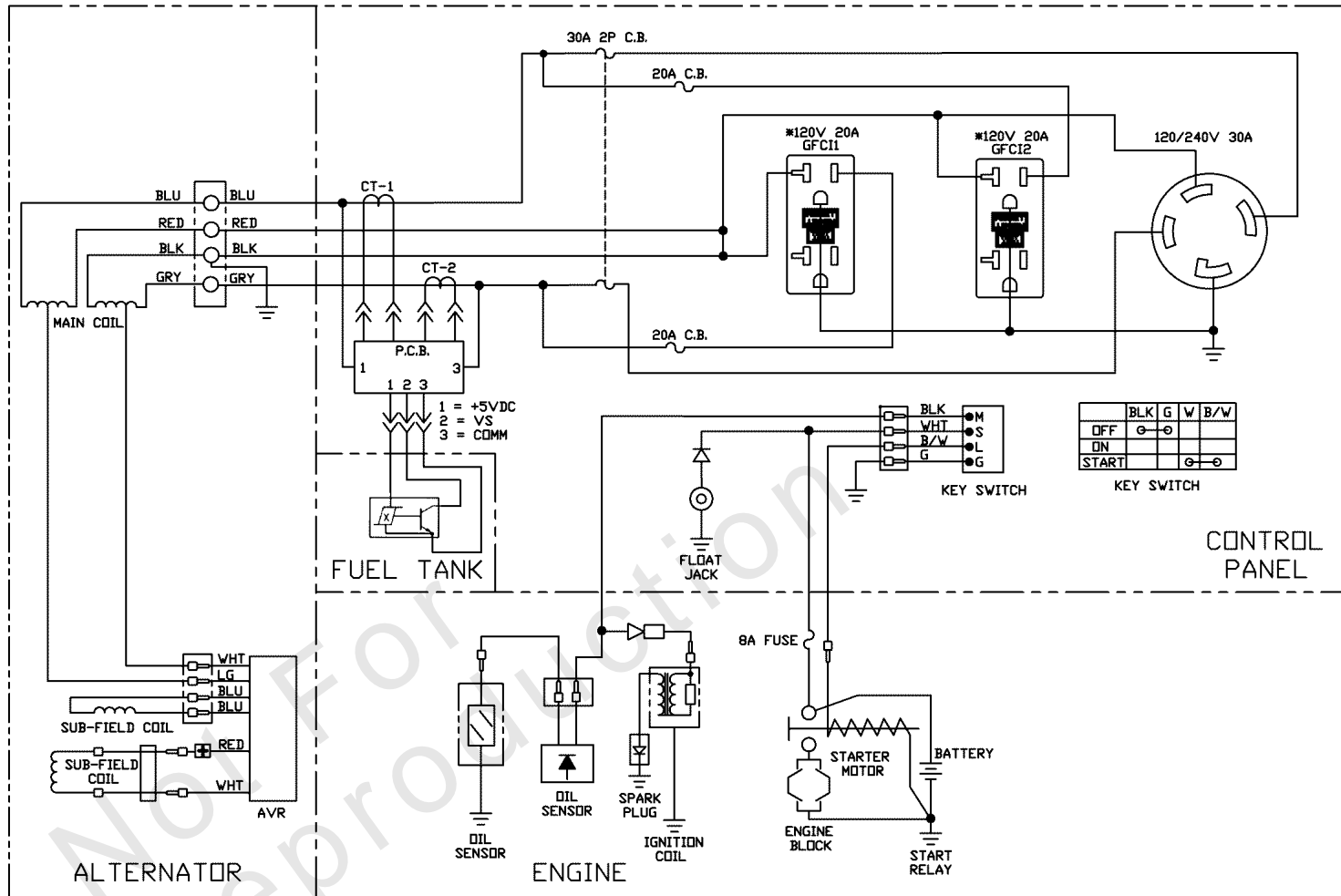
REF NO	PART NO	QTY	DESCRIPTION
--	-----		Wiring Diagram Only
--	-----		WARNING - Generator Voltage Could Cause Electrical Shock or Burn Resulting in Death Or Serious Injury. To Avoid Electrical Shock Or Burn Hazard, Please Refer Service To Qualified Personnel.

Not For Reproduction

Wiring Schematic (80016749WS)

Note: Unless noted otherwise, use the standard torque specifications

Mfg. No: 030679-00



* CONNECTION OF LINE AND LOAD POINTS ON GFCI RECEPTACLE SHOWN MAY NOT REPLICATE ACTUAL GFCI RECEPTACLE USED. REFER TO ACTUAL GFCI RECEPTACLE USED FOR PROPER CONNECTION OF LINE AND LOAD POINTS.

Wiring Schematic (80016749WS)

REF NO	PART NO	QTY	DESCRIPTION
--	-----		Wiring Schematic Only
--	-----		WARNING - Generator Voltage Could Cause Electrical Shock or Burn Resulting in Death Or Serious Injury. To Avoid Electrical Shock Or Burn Hazard, Please Refer Service To Qualified Personnel.

Not For Reproduction

Hardware Identification & Torque Specifications

Torque Specification Chart								
FOR STANDARD METRIC MACHINE HARDWARE (Tolerance ± 20%)								
Property Class	5.6		8.8		10.9		12.9	
	Class 5.6		Class 8.8		Class 10.9		Class 12.9	
Size Of Hardware	in/lbs	Nm.	in/lbs	Nm.	in/lbs	Nm.	in/lbs	Nm.
	ft/lbs		ft/lbs		ft/lbs		ft/lbs	
M3	5.88	.56	13.44	1.28	19.2	1.80	22.92	2.15
M4	13.44	1.28	30.72	2.90	43.44	4.10	52.56	4.95
M5	26.4	2.50	60.96	5.75	5.97	8.10	7.15	9.7
M6	44.64	4.3	7.3	9.9	10.3	14	12.1	16.5
M7	5.2	7.1	12.1	16.5	16.9	23	19.9	27
M8	7.7	10.5	17.7	24	25	34	29	40
M10	15	21	35	48	50	67	59	81
M12	26	36	61	83	86.2	117	103	140
M14	42	58	101	132	136	185	162	220
M16	64	88	147	200	210	285	250	340
M18	89	121	202	275	287	390	346	470
M20	126	171	290	390	405	550	486	660
M22	169	230	390	530	559	745	656	890
M24	217	295	497	375	708	960	840	1140
M27	320	435	733	995	1032	1400	1239	1680
M30	435	590	995	1350	1401	1900	1681	2280
M33	590	800	1349	1830	1902	2580	2278	3090
M36	759	1030	1740	2360	2441	3310	2935	3980
M39	988	1340	2249	3050	3163	4290	3798	5150

Torque Specification Chart						
FOR STANDARD MACHINE HARDWARE (Tolerance ± 20%)						
Hardware Grade	No Marks		SAE Grade 5		SAE Grade 8	
	SAE Grade 2		SAE Grade 5		SAE Grade 8	
Size Of Hardware	in/lbs	Nm.	in/lbs	Nm.	in/lbs	Nm.
	ft/lbs		ft/lbs		ft/lbs	
8-32	19	2.1	30	3.4	41	4.6
8-36	20	2.3	31	3.5	43	4.9
10-24	27	3.1	43	4.9	60	6.8
10-32	31	3.5	49	5.5	68	7.7
1/4-20	66	7.6	8	10.9	12	16.3
1/4-28	76	8.6	10	13.6	14	19.0
5/16-18	11	15.0	17	23.1	25	34.0
5/16-24	12	16.3	19	25.8	29	34.0
3/8-16	20	27.2	30	40.8	45	61.2
3/8-24	23	31.3	35	47.6	50	68.0
7/16-14	30	40.8	50	68.0	70	95.2
7/16-20	35	47.6	55	74.8	80	108.8
1/2-13	50	68.0	75	102.0	110	149.6
1/2-20	55	74.8	90	122.4	120	163.2
9/16-12	65	88.4	110	149.6	150	204.0
9/16-18	75	102.0	120	163.2	170	231.2
5/8-11	90	122.4	150	204.0	220	299.2
5/8-18	100	136	180	244.8	240	326.4
3/4-10	160	217.6	260	353.6	386	525.0
3/4-16	180	244.8	300	408.0	420	571.2
7/8-9	140	190.4	400	544.0	600	816.0
7/8-14	155	210.8	440	598.4	660	897.6
1-8	220	299.2	580	788.8	900	1,244.0
1-12	240	326.4	640	870.4	1,000	1,360.0

The guides and ruler furnished below are designed to help you select the appropriate hardware.

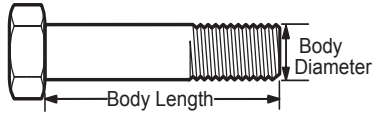


Nut, M8

Thread Diameter (mm)

Inside Diameter (in) Threads per inch

Nut, 1/2-16

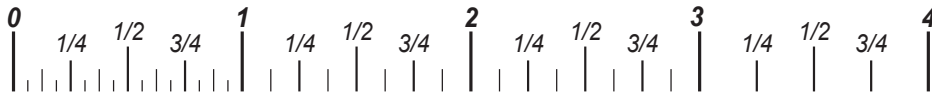


Screw, M8- 1.25 x 25

Thread Diameter (mm) Distance between threads (mm) Body Length (mm)

Body Diameter Threads per inch Body Length (in)

Screw, 1/2- 16 x 2



Standard Hardware Sizing

When a washer or nut is identified as 1/2" (M8), this is the *Nominal size*, meaning the *inside diameter* is 1/2 inch (8mm metric thread diameter); if a second number is present it represents the *threads per inch* (distance between threads).

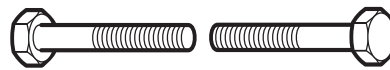
When bolt or capscrew is identified as 1/2 - 16 x 2" (M8 - 1.25 x 50), this means the *Nominal size*, or body diameter is 1/2 inch (8mm metric thread diameter), the second number, 16, represents the *threads per inch*, (*distance between threads*). The final number is the body length of the bolt or screw, 2 inches (50mm).

NOTES

- These torque values are to be used for all hardware excluding: locknuts, self-tapping screws, thread forming screws, sheet metal screws and socket head setscrews.
- Recommended seating torque values for locknuts:
 - for prevailing torque locknuts - use 65% of grade 5 torques.
 - for flange whizlock nuts and screws - use 135% of grade 5 torques.
- Unless otherwise noted on assembly drawings, all torque values must meet this specification.

Common Hardware Types

Hex Head Capscrew



Washer



Carriage Bolt



Hex Nut

Wrench & Fastener Size Guide

1/4" Bolt or Nut Wrench—7/16"	5/16" Bolt or Nut Wrench—1/2"	3/8" Bolt or Nut Wrench—9/16"	7/16" Bolt or Nut Wrench (Bolt)—5/8" Wrench (Nut)—11/16"	1/2" Bolt or Nut Wrench—3/4"
M6 Bolt or Nut Wrench—10mm	M8 Bolt or Nut Wrench—13mm	M10 Bolt or Nut Wrench—17mm	M12 Bolt or Nut Wrench—19mm	M14 Bolt or Nut Wrench—22mm

